

| PRODUCT CATALOG

**UNOMAT<sup>®</sup>**  
INTERNATIONAL GERMANY

[www.unomatinternational.com](http://www.unomatinternational.com)

## ABOUT US

Unomat International, originally established in Germany, has been synonymous with high-quality photography products. In 2010, Unomat was acquired by Jamaica Trading Co., ushering in a new era of an expanded product range in the photo and power industry.

Today, Unomat International is a prominent name in the Photo & Power industry, offering a diverse spectrum of products, including batteries, UPS systems, inverters, photo paper, and other media essentials. With a legacy of precision and a future dedicated to delivering greater value to its customers, Unomat continues to empower change and trusted solutions for its customers worldwide.



# OUR PRODUCTS

Unomat provides you with products that define quality and satisfaction. Our diverse product range includes inkjet photo paper, photo chemicals, batteries, UPS systems, inverters, and other media essentials. Whether preserving memories with vibrant prints or powering critical devices, Unomat combines technology and durability, making it a preferred choice in the photo and power industry. Start looking for the products we have in stock for you.



Batteries



UPS Systems



Off-grid Inverters



Inkjet Photo Paper



Thermal POS Paper



Photo Chemicals

# BATTERIES

We have the most extensive selection of batteries. From rechargeable to lithium or alkaline, we've got everything you need. Available in different sizes- 9V, AA, AAA, C-size, D-size, and more.



Force Alkaline



Resilience Rechargeable



Rechargeable Battery Charger



Muscle Heavy Duty



Fortitude Alkaline Ultra-Premium



Marathon Ultra-Alkaline Battery



Lithium Coin Battery



## FORCE ALKALINE

- Available in 9V, AA, AAA, 27A, and 23A.
- Long performance period.
- Designed for extra-powered devices.
- Shelf-life up to 5 years.
- Best use: Joysticks, Cameras, Smoke Detectors, Wireless Mouse, Remote Controller, etc.



9V



AA



AAA



23A



27A

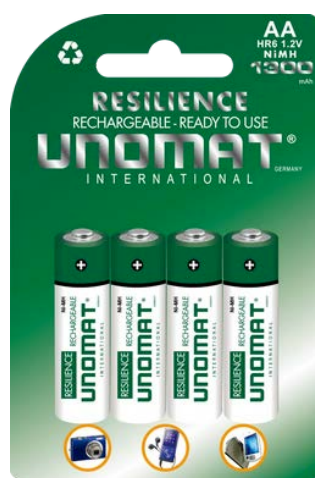
Available in single-pack, multi-pack, and value pack.

## RESILIENCE RECHARGEABLE

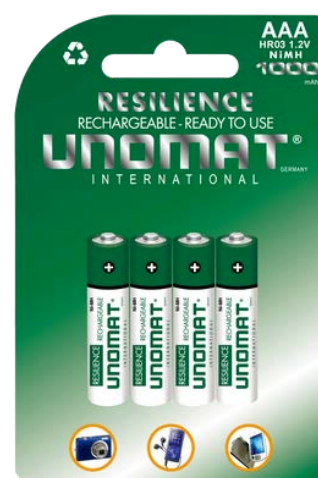
- Available in 9V, AA, and AAA
- Long performance period.
- Designed for extra-powered devices.
- Ready to use batteries.
- Best use: Joysticks, Cameras, Smoke Detectors, Wireless Mouse, Remote Controller, etc.



9V



AA



AAA

Available in: 1000, mAh, 1300mAh, 1500mAh, 1800mAh, 2100mAh, 2500 mAh and 2700mAh

Available in single-pack, multi-pack, and value pack.

## MUSCLE HEAVY DUTY

- Available in 9V, AA, AAA, C, and D sizes.
- Long performance period.
- Designed for day-to-day devices.
- Shelf-life up to 3 years.
- Best use: Joysticks, Cameras, Smoke Detectors, Wireless Mouse, Remote Controller, etc.



9V



AA



AAA



C-Size



D-Size

Available in single-pack, multi-pack, and value pack.

## FORTITUDE ALKALINE ULTRA-PREMIUM

- Available in AA and AAA sizes.
- Long performance period.
- Designed for extra-powered devices.
- Shelf-life up to 10 years.
- Best use: Joysticks, Cameras, Smoke Detectors, Wireless Mouse, Remote Controller, etc.



**AA**



**AAA**

Available in single-pack, multi-pack, and value pack.

## MARATHON ULTRA-ALKALINE

- Available in AA and AAA sizes.
- Long performance period.
- Designed for extra-powered devices.
- Shelf-life up to 7 years.
- Best use: Joysticks, Cameras, Smoke Detectors, Wireless Mouse, Remote Controller, etc.



AA



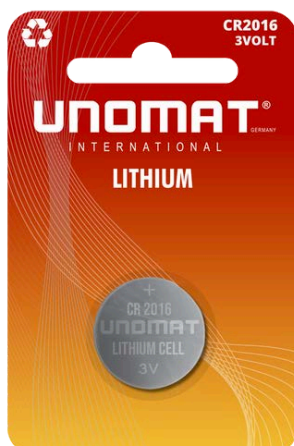
AAA

Available in single-pack, multi-pack, and value pack.

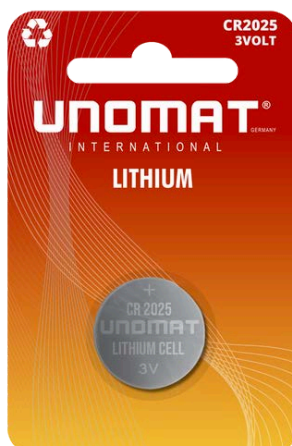


## LITHIUM COIN

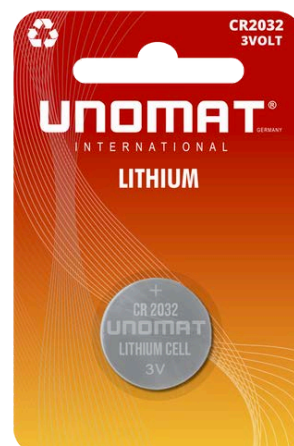
- Available in CR2016, CR2025 and CR2032.
- Long performance period.
- Designed for everyday-use pocket-sized devices.
- Shelf-life up to 5 years.
- Best use: Key Fobs, Glucose Monitors, Thermometers, etc.



**CR2016**



**CR2025**



**CR2032**

Available in single-pack, multi-pack, and value pack.



# UPS SYSTEMS

The Unomat UPS has a full range input voltage, short transfer time, intelligent battery management, over/under-voltage protection, and automatic low-battery voltage shutdown. Available from 600VA to 40KVA. All in all, Unomat UPS never leaves you without power and protection.



Line Interactive UPS



TOP UPS



1 Phase RT Series Online UPS



1 Phase Tower Series Online UPS



3:1 Phase RT Series Online UPS



3:1 Phase Tower Series Online UPS



Transformer-based Industrial UPS

## LINE INTERACTIVE UPS



- Line Interactive UPS with simulated sinewave output.
- Excellent microprocessor control guarantees high reliability (Internal self-diagnostic technology).
- Boost and buck AVR for voltage stabilization (Wide input range with two boosts and one buck control).
- Auto restart while AC is recovering.
- Cold start function.
- Off-mode charging.
- Fast intelligent battery recharge function.
- Generator compatible.
- Offering LED and LCD panels for selections.
- Optional USB/RS232 communication port and RJ11/RJ45 protection.



**Rear Panel**

- ① AC input
- ② Output IEC socket
- ③ Optional USB & RJ11 communication
- ④ Optional USB & RS232 communication
- ⑤ Optional RJ45



**LCD Display**



**Optional Socket**



**LED Display**



## LINE INTERACTIVE UPS

### Technical Specifications

MODEL	UM-IEC 650	UM-IEC 850	UM-IEC 1050	UM-IEC 1200	UM-IEC 1500	UM-IEC 2000	UM-IEC 3000	UM-IEC 3500
Capacity	650VA	850VA	1050VA	1200VA	1500VA	2000VA	3000VA	3500VA
INPUT								
Voltage	220/230/240Vac							
Voltage Range	140~300Vac							
Frequency Range	50/60Hz (Auto sensing)							
OUTPUT								
AC Voltage Regulation (Batt. Mode)	± 10%							
Frequency Range (Batt. Mode)	50/60Hz ± 1 Hz							
Transfer Time	Typical 4~8ms, 13ms Max.							
Waveform (Batt. Mode)	Simulated Sinewave							
BATTERY								
Battery Voltage	12Vdc	24Vdc					48Vdc	
Battery Type & Number	12 V/7Ah × 1	12 V/9Ah × 1	12 V/7Ah × 2	12 V/9Ah × 2		12 V/7Ah × 4	12 V/9Ah × 4	
Typical Recharge Time	4~6 hours recover to 90% capacity		6~8 hours recover to 90% capacity					
INDICATORS								
LED Display (LED version)	AC Mode, Battery Mode, Overload, Fault						N/A	
LCD Display (LCD version)	AC Mode, Battery Mode, Load Level, Battery Level, Input Voltage, Output Voltage, Overload, Fault, and Battery Low							
PROTECTION								
Full Protection	Short circuit, Overload, Overcharge and overdischarge protection							
ALARM								
Battery mode	Sounding every 10 seconds							
Low Battery	Sounding every second							
Overload	Sounding every 0.5 second							
Battery Replacement Alarm	Sounding every 2 seconds							
Fault	Continuously sounding							
MANAGEMENT								
Communication port	USB or RS232 (Supports Windows® 2000/2003/XP/Vista/2008, Windows® 7, Linux, Unix, and MAC)							
OPERATING ENVIRONMENT								
Humidity	0~90 % RH @ 0~ 40° C (Non-condensing)							
Noise Level	Less than 45dB				Less than 55dB			
PHYSICAL								
Approx. Dimension (D × W × H )	298 × 101 × 142mm		353 × 149 × 162mm		380 × 158 × 198mm		436 × 145 × 212mm	
Approx. Net Weight	Approx. 4.3kg	Approx. 4.9kg	Approx. 7.8kg	Approx. 8.4kg	Approx. 10.1kg	Approx. 10.5kg	Approx. 20kg	Approx. 23kg



Scan to download the data sheet

Specifications are subject to change without prior notice.  
Data above are typical values for reference only, not a basis for engineering design.



## TOP UPS



- Boost and Buck AVR corrects either under-voltage or over-voltage conditions to minimize the usage of battery energy, hence extending the life of the battery.
- Built-in USB charger supplies feasible access to recharge your mobile or PAD alone.
- With an ergonomic cable management design, all the access of the cable is from top only.
- Cold Start Function.
- Smart USB Interface for Power management supports real-time power and UPS status monitoring. Automatic shutdown, schedule and many other advance power management functions.
- Auto-restart function enables the UPS may be automatically re-started when Utility recovers.



- ① AC input
- ② Output socket
- ③ USB communication
- ④ USB charger

**Rear Panel**



**2 kinds of LCD Display**



**Optional Socket**



**LED Display**

## TOP UPS

## Technical Specifications

Model	UM TOP 650		UM TOP 850		UM TOP 1050	
Capacity	600VA/360W		800VA/480W		1000VA/600W	
INPUT						
Voltage	220/230/240Vac					
Voltage Range	162 ~ 290Vac					
Frequency Range	50/60Hz (1 ± 10%) auto-sensing					
OUTPUT						
AC Voltage Regulation (Batt. Mode)	± 10%					
Frequency Range (Batt. Mode)	50/60Hz ± 1Hz					
Transfer Time	Typical 2~6 ms, 10 ms Max.					
Waveform (Batt. Mode)	Simulated Sinewave					
BATTERY						
Battery Voltage	12Vdc					
Battery Type & Number	12V/7Ah × 1		12V/9Ah × 1		12V/10Ah × 1	
Typical Recharge Time	6~8 hours recover to 90% capacity					
INDICATORS						
LED Display(LED version)	AC Mode, Battery Mode, Overload, Fault					
LCD Display(LCD version)	AC Mode, Battery Mode, Load Level, Battery Level, Input Voltage, Output Voltage, Overload, Fault, and Battery Low					
PROTECTION						
Full Protection	Short circuit, Overload , Overcharge and overdischarge protection					
ALARM						
Battery mode	Sounding every 10 seconds					
Low Battery	Sounding every second					
Overload	Sounding every 0.5 second					
Battery Replacement Alarm	Sounding every 2 seconds					
Fault	Continuously sounding					
MANAGEMENT						
Communication port	USB or RS232(Supports Windows® 2000/2003/XP/Vista/2008, Windows® 7, Linux, Unix, and MAC)					
Other						
USB Charger port	5Vdc/1A or 5Vdc/2A type A (For mobile or iPad charging)					
OPERATING ENVIRONMENT						
Humidity	0~90 % RH @ 0~ 40° C (Non-condensing)					
Noise Level	Less than 45dB					
PHYSICAL						
Approx. Dimension (D × W × H)	293 × 202 × 93mm				309 × 202 × 93mm	
Approx. Net Weight	Approx. 3.6kg		Approx. 4.9kg		Approx. 6.4kg	
Safety	IEC/EN 62040-1; IEC/EN 60950-1					
EMC	IEC/EN 62040-2; IEC 61000-4-2; IEC 61000-4-3; IEC 61000-4-4; IEC 61000-4-5; IEC 61000-4-6; IEC 61000-4-8					
Performance	IEC/EN 62040-3					



Scan to download the data sheet

Specifications are subject to change without prior notice.  
Data above are typical values for reference only, not a basis for engineering design.

## 1 PHASE RT SERIES ONLINE UPS



Colorful LCD



Blue LCD



Advanced Touch screen

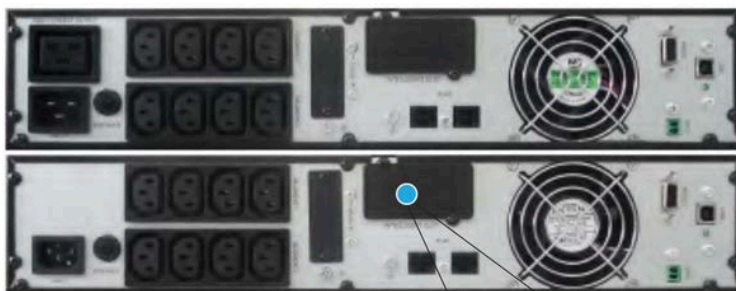


Battery cabinet (optional)



Optimized battery configuration 7Ah/9Ah (12V)

- Rack/Tower convertible design.
- Online double conversion with full digital control.
- Wide input voltage range: 110~300Vac.
- Input power factor 0.99 with PFC.
- Selectable output voltage: 208/220/230/240Vac.
- Smart charger design for optimized battery performance.
- Maximum charging current can be expanded to 12A (Long run unit).
- Emergency power off function (EPO)
- ECO mode operation for energy-saving.
- Generator compatible.
- Hot-Swappable battery design.
- Cold start function.
- Intelligent fan speed regulation ·Load segment settable (Optional).
- Versatile LCD human-computer interface.
- Multiple communication interfaces: RS232 (USB/EPO/Relay card/SNMP card optional)
- Multiple protection functions: short-circuit, overload, overheat, battery overcharge and over-discharge, output low voltage, and fan fault alarm.
- PDU with maintenance bypass switch (Optional).



Optional Socket



Relay Card



SNMP



Multifunctional Bracket



The LCD panel can be rotated

# 1 PHASE RT SERIES ONLINE UPS

## Technical Specifications:

MODEL	UM-RT 1000	UM-RT 1500	UM-RT 2000	UM-RT 3000
Capacity	1000VA / 900W	1500VA / 1350W	2000VA / 1800W	3000VA / 2700W
INPUT				
Nominal voltage	208/220/230/240Vac			
Input voltage range	110~300Vac (176~264Vac @ 100% load)			
Power factor	≥0.99			
FREQUENCY				
Frequency range	40~70Hz (50/60Hz Auto-Sensing)			
OUTPUT				
Output voltage	208/220/230/240Vac			
Voltage regulation	± 1%			
Power factor	0.9			
Output frequency	Line mode	46~54Hz or 56~64Hz		
	Bat. mode	(50/60 ± 0.1%)Hz		
Crest factor	3:1			
Harmonic distortion (THDv)	≤3% Linear load			
	≤5% Non linear load			
Transfer time	AC mode to Batmode	0ms		
	Inverter to Bypass	4ms (Typical)		
Output waveform	Pure Sinewave			
EFFICIENCY				
AC mode	89%	89%	91%	92%
Battery mode	85%	85%	87%	88%
BATTERY				
Battery number	2	3	4	6
Capacity (Standard unit)	9Ah/12V (7Ah/12V Optional)			
Typical recharging time	4 hours (To 90% of full capacity)			
Charging current (Max.)	1A			
INDICATORS				
LED display	Line mode,Bat.mode,ECO mode,Bypass mode,Battery low voltage,Overload & UPS fault			
LCD display	Input voltage,Input frequency,Output voltage,Output frequency,Load percentage, Battery voltage,Inner temperature& Remaining battery backup time			
ALARM				
Battery mode	Beeping every 4 seconds			
Battery low	Beeping every second			
Overload	Beeping twice every second			
Fault	Continuously beeping			
PHYSICAL				
Dimension (W x D x H)	440x325x86.5mm	440x460x86.5mm	440x460x86.5mm	440 x 600 x 86.5mm
Net weight	11.3kg	16.5kg	19.5kg	26kg
ENVIRONMENT				
Operating temperature	0℃~40℃			
Storage temperature	-25℃~55℃			
Humidity range	20~95%RH @ 0~40℃ (Non condensing)			
Altitude	<1500m,derating required when>1500m			
Noise level	<50dB at 1 Meter			
STANDARDS				
Safety	IEC/EN62040-1,IEC/EN62477-1			
EMC	IEC/EN62040-2,IEC61000-4-2,IEC61000-4-3,IEC61000-4-4,IEC61000-4-5,IEC61000-4-6,IEC61000-4-8			

When output voltage is 208Vac, need to derate to 80% of the unit capacity

Specifications are subject to change without prior notice

Data above are typical values for reference only, not as a basis for engineering design



Scan to download the data sheet



## 1 PHASE RT SERIES ONLINE UPS



Colorful LCD



Blue LCD



Advanced Touch screen



Battery cabinet (optional)



Optimized battery configuration 7Ah/9Ah (12V)

- High power density.
- LCD supports Rack/Tower convertible design.
- N+X parallel redundancy supports a maximum of 4 units in parallel.
- Online double conversion with full digital control.
- Optimization battery group, the quantity of battery: 16/18/20pcs (Settable).
- Wide input voltage range: 110~286Vac.
- Wide input frequency range.
- Generator compatible.

- ECO mode operation for energy saving.
- Self-testing when UPS startup
- Multiple communication interfaces: RS232/USB/PO (Relay card/SNMP card optional).
- Parallel kit default.
- Maximum charging current up to 10A.
- Cold start function.
- Intelligent fan speed regulation.
- Multiple protection functions: short-circuit, overload, overheat, battery overcharge and over-discharge, output low voltage, and fan fault alarm.
- PDU with maintenance bypass switch (Optional).



Parallel Board



Relay Card



SNMP



Multifunctional Bracket



The LCD panel can be rotated



# 1 PHASE RT SERIES ONLINE UPS

## Technical Specifications:

MODEL		UM RT 6000	UM RT 10000
Capacity		6000VA/5400W	10000VA/9000W
INPUT			
Nominal voltage		208/220/230/240Vac	
Input voltage range		110 ~ 286Vac	
Power factor		≥0.99	
Bypass voltage range		Max.voltage: 220V: + 25% (Optional + 10%, + 15%, + 20%) 230V: + 20% (Optional + 10%, + 15%) 240V: + 15% (Optional + 10%) Min.voltage: - 45% (Optional - 20%, - 30%)	
FREQUENCY			
Frequency range		40~70Hz (50/60Hz Auto-Sensing)	
OUTPUT			
Output voltage		208/220/230/240Vac	
Voltage regulation		± 1%	
Power factor		0.9	
Output frequency	Line mode	± 1%/ ± 2%/ ± 4%/ ± 5%/ ± 10% of the rated frequency (Optional)	
	Bat. mode	(50/60 ± 0.1%)Hz	
Crest factor		3:1	
Harmonic distortion (THDv)		≤2% Linear load ≤5% Non linear load	
Transfer time	AC mode to Bat.mode	0ms	
	Inverter to Bypass	0ms	
Output waveform		Pure Sinewave	
Overload	Line mode	Load≤110% last 60min; ≤125% last 10min; ≤150% last 1min; > 150% turn to bypass mode immediately	
	Bypass mode	40A (Breaker)	63A (Breaker)
Efficiency		Up to 93.5%	
BATTERY			
Battery voltage		± 96/ ± 108/ ± 120Vdc (Settable)	
Typical recharging time		6 ~ 8 hours (To 90% of full capacity)	
Charging current		Max.current 10A (Charging current can be set according to battery capacity)	
INDICATORS			
LED display		Line mode, Bat.mode, ECO mode, Bypass mode, Battery low voltage, Overload & UPS fault	
LCD display		Input voltage, Input frequency, Output voltage, Output frequency, Load percentage, Battery voltage, Inner temperature & Remaining battery backup time	
ALARM			
Battery mode		Beeping every 4 seconds	
Battery low		Beeping every second	
Overload		Beeping twice every second	
Fault		Continuously beeping	
PHYSICAL			
Dimension (W × D × H)		440 × 625 × 86.5mm	
Net weight		16kg	18kg
ENVIRONMENT			
Operating temperature		0℃ ~ 40℃	
Storage temperature		- 25℃ ~ 55℃	
Humidity range		20 ~ 95%RH @ 0 ~ 40℃ (Non condensing)	
Altitude		< 1500m, derating required when > 1500m	
Noise level		< 55dB at 1 Meter	< 58dB at 1 Meter
STANDARDS			
Safety		IEC/EN 62040-1, IEC/EN 62477-1	
EMC		IEC/EN 62040-2 (IEC 61000-4-2, IEC 61000-4-3, IEC 61000-4-4, IEC 61000-4-5, IEC 61000-4-6, IEC 61000-4-8, IEC 61000-4-11, IEC 61000-2-2)	



Scan to download the data sheet

When output voltage is 208Vac, need to derate to 80% of the unit capacity  
 Specifications are subject to change without prior notice  
 Data above are typical values for reference only, not as a basis for engineering design

## 1 PHASE TOWER SERIES ONLINE UPS



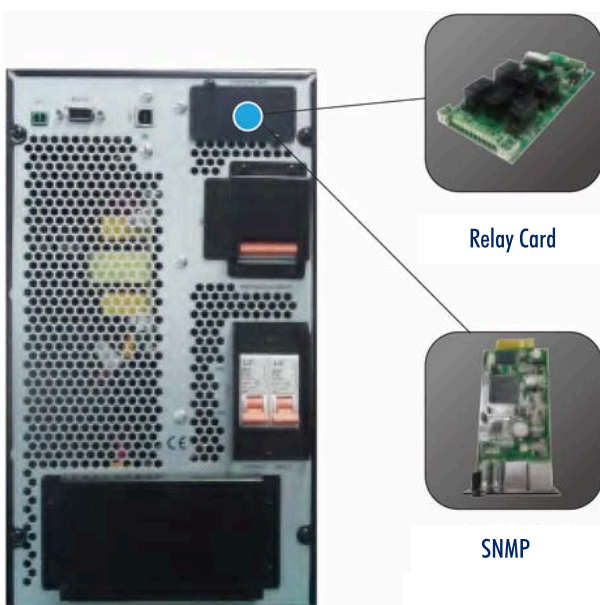
Colorful LCD



Blue LCD

Advanced  
Touch screenBattery cabinet  
(optional)Optimized battery configuration  
7Ah/9Ah (12V)

- Online double conversion with full digital control.
- Optimization battery group, the quantity of battery: 16/18/20pcs (Settable).
- Wide input voltage range: 110~286Vac.
- Input power factor 0.99 with PFC.
- Wide input frequency range.
- Selectable output voltage: 208/220/230/240Vac.
- Generator compatible.
- ECO mode operation for energy-saving.
- Self-testing when UPS startup.
- Multiple communication interface: RS232/USB/EPO (Relay card/SNMP card optional).
- Cold start function.
- Design with maintenance switch (Optional).
- Intelligent fan speed regulation.
- Multiple protection functions: short-circuit, overload, overheat, battery overcharge and over-discharge, output low voltage, and fan fault alarm.



# 1 PHASE TOWER SERIES ONLINE UPS

## Technical Specifications:

MODEL		UM 6000	UM 10000
Capacity		6000VA/5400W	10000VA/9000W
INPUT			
Nominal voltage		208/220/230/240Vac	
Input voltage range		110 ~ 286Vac	
Power factor		≥0.99	
Bypass voltage range		Max.voltage: 230 ~ 264Vac Min.voltage: 176 ~ 220Vac	
FREQUENCY			
Frequency range		40 ~ 70Hz (50/60Hz Auto-Sensing)	
OUTPUT			
Output voltage		208/220/230/240Vac	
Voltage regulation		± 1%	
Power factor		0.9	
Output frequency	Line mode	± 10% of the rated frequency	
	Bat. mode	(50/60 ± 0.1%)Hz	
Crest factor		3:1	
Harmonic distortion (THDv)		≤2% Linear load ≤5% Non linear load	
Transfer time	AC mode to Bat.mode	0ms	
	Inverter to Bypass	5ms (Typical)	
Output waveform		Pure Sinewave	
Overload	Line mode	Load≤ 105% long time running; ≤ 125% last 10min; ≤ 130% last 30s; > 130% turn to bypass mode immediately	
	Bypass mode	40A (Breaker)	63A (Breaker)
Efficiency		Up to 93.5%	
BATTERY			
Battery voltage		240Vdc	
Capacity		16 x 7Ah/12V	16 x 9Ah/12V
Typical recharging time		6 ~ 8 hours (To 90% of full capacity)	
Charging current		1.35A (Charging current can be set according to battery capacity)	
INDICATORS			
LED display		Line mode, Bat.mode, ECO mode, Bypass mode, Battery low voltage, Overload & UPS fault	
LCD display		Input voltage, Input frequency, Output voltage, Output frequency, Load percentage, Battery voltage, Inner temperature & Remaining battery backup time	
ALARM			
Battery mode		Beeping every 4 seconds	
Battery low		Beeping every second	
Overload		Beeping twice every second	
Fault		Continuously beeping	
PHYSICAL			
Dimension (W × D × H)		S: 191 × 460 × 720mm (With wheel)	
Net weight		69.5kg	71kg
ENVIRONMENT			
Operating temperature		0℃ ~ 40℃	
Storage temperature		- 25℃ ~ 55℃	
Humidity range		20 ~ 95%RH @ 0 ~ 40℃ (Non condensing)	
Altitude		< 1500m, derating required when > 1500m	
Noise level		< 55dB at 1 Meter	< 58dB at 1 Meter
STANDARDS			
Safety		IEC/EN 62040-1, IEC/EN 62477-1	
EMC		IEC/EN 62040-2, IEC 61000-4-2, IEC 61000-4-3, IEC 61000-4-4, IEC 61000-4-5, IEC 61000-4-6, IEC 61000-4-8, IEC 61000-4-11, IEC 61000-2-2	



Scan to download the data sheet

When output voltage is 208Vac, need to derate to 80% of the unit capacity  
Specifications are subject to change without prior notice  
Data above are typical values for reference only, not as a basis for engineering design

## 3:1 PHASE RT SERIES ONLINE UPS



Segment LCD



TFT Colorful LCD

Battery cabinet  
(optional)Optimized battery configuration  
7Ah/9Ah (12V)

- LCD support Rack/Tower convertible design.
- N+X parallel redundancy supports a maximum of 4 units in parallel.
- Online double conversion with DSP control.
- Input current harmonic: <3%
- Wide input voltage range: 208~478Vac
- Wide input frequency range 40~70Hz.
- Optimization battery group, the quantity of battery: 30~50pcs is settable.
- Maximum charging current up to 20A (Settable).
- Dual input source.
- Support 3/3 and 3/1 and 1/1 operation.
- Generator compatible.
- ECO mode operation for energy-saving.
- Cold start function.
- Intelligent fan speed regulation.
- Self-testing when UPS startup.
- 50/60Hz Frequency converter mode.
- The output can meet a 100% unbalanced load.
- Multiple protection functions: short-circuit, overload, overheat, battery overcharge and over-discharge, output low voltage, and fan fault alarm.
- RS232, RS485, Parallel, Intelligent Slot (SNMP card/Relay card (Optional), BMS (Optional), EPO port, Output port, MAINTAIN-AUXSWS port.
- PDU with maintenance bypass switch (Optional).



Parallel Cable



SNMP



Relay Card



## 3:1 PHASE RT SERIES ONLINE UPS

### Technical Specifications:

MODEL		UMRT10KMP31	UMRT15KMP31	UMRT20KMP31
Capacity		10kVA/10kW	15kVA/15kW	20kVA/20kW
INPUT				
Nominal voltage		380/400/415Vac (3Ph+N+PE) 220/230/240Vac (L+N+PE)		
Operating voltage range		208~478Vac		
Operating frequency range		40~70Hz (50/60Hz Auto-Sensing)		
Power factor		≥0.99		
Bypass voltage range		Max.voltage: 220V: +25% (Optional+10%, +15%, +20%) 230V: +20% (Optional+10%, +15%) 240V: +15% (Optional+10%) Min.voltage: -45% (Optional-20%, -30%)		
Frequency protection range		50/60Hz±10%		
Harmonic distortion (THDi)		≤3% Linear load		
OUTPUT				
Output voltage		380/400/415Vac (3Ph+N+PE) 220/230/240Vac (L+N+PE)		
Voltage regulation		±1%		
Power factor		1.0		
Output frequency	Line mode	±1%/±2%/±4%/±5%/±10% of the rated frequency (Optional)		
	Bat. mode	(50/60±0.1%)Hz		
Transfer time	AC mode to Bat.mode	0ms		
	Inverter to Bypass	0ms		
Output waveform		Pure Sinewave		
Crest factor		3:1		
Harmonic distortion (THDv)		≤2% Linear load ≤5% Non linear load		
Overload	Line mode	Load≤110%: last 60min; ≤125%: last 10min; ≤150%: last 1min; ≥150% turn to bypass mode immediately		
	Bat. mode	Load≤110%: last 10min; ≤125%: last 1min; ≤150%: last 5s; ≥150% shut down UPS immediately		
	Bypass mode	Breaker (Load < 125%, long-term operation)		
EFFICIENCY				
Efficiency		up to 94.5%		up to 95%
BATTERY				
Battery voltage		±180/192/204/216/228/240/252/264/276/288/300Vdc (30/32/34/36/38/40/42/4/46/48/50pcs settable)		
Charge current		18A Max.		20A Max.
PHYSICAL				
Dimension W×D×H		443×580×131mm (3U)		
Net weight		29kg	31kg	32kg
ENVIRONMENTAL				
Operating temperature		0℃~40℃		
Storage temperature		-25℃~55℃		
Humidity range		0~95% (Non-condensing)		
Altitude		<1500m, derating required when>1500m		
Noise level		<55dB		<58dB
STANDARDS				
Safety		IEC/EN 62040-1, IEC/EN 62477-1		
EMC		IEC/EN 62040-2 (IEC 61000-4-2, IEC 61000-4-3, IEC 61000-4-4, IEC 61000-4-5, IEC 61000-4-6, IEC 61000-4-8, IEC 61000-4-11, IEC 61000-2-2)		



Specifications are subject to change without prior notice  
Data above are typical values for reference only, not as a basis for engineering design

Scan to download the data sheet



## 3:1 PHASE TOWER SERIES ONLINE UPS



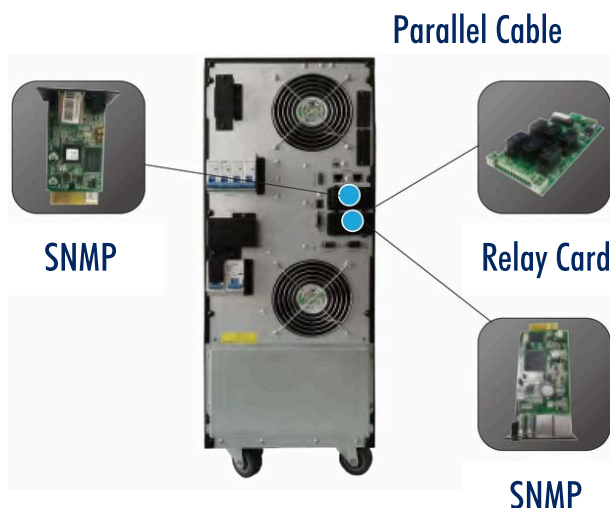
Segment LCD



TFT Colorful LCD

Battery cabinet  
(optional)Optimized battery configuration  
7Ah/9Ah (12V)

- N+X parallel redundancy, support maximum 4 units in parallel.
- Online double conversion with DSP control.
- Optimization battery group, the quantity of battery: 16/18/20pcs (32~40pcs supportable)
- Wide input voltage range: 208~478Vac
- Wide input frequency range: 40Hz~70Hz
- Input current harmonic: <3%
- Dual input source (Optional)
- Maximum charging current up to 18A (Settable).
- Support 3/1 and 1/1 operation
- Generator compatible
- ECO mode operation for energy-saving
- Design with maintenance switch
- Cold start function.
- Intelligent fan speed regulation
- Self-testing when UPS startup
- 50/60Hz frequency converter mode
- Colorful 2.4-inch TFT LCD display and 7-inch LCD display are optional
- Multiple protection function: short-circuit, overload, overheat, battery overcharge and over-discharge, output low voltage, and fan fault alarm.
- Multiple communication interface: RS232/RS485/USB/EPO/Dry contact port (Relay card/SNMP card/Parallel cable/Battery temperature sensor optional).



## 3:1 PHASE TOWER SERIES ONLINE UPS

### Technical Specifications:

MODEL		UM10000TWR31	UM15000TWR31	UM20000TWR31
Capacity		10kVA/10kW	15kVA/15kW	20kVA/20kW
INPUT				
Nominal voltage		380/400/415Vac (3PH+N+PE) 220/230/240Vac (L+N+PE)		
Operating voltage range		208 ~ 478Vac; 120 ~ 276Vac		
Operating frequency range		40 ~ 70Hz (50/60Hz Auto-Sensing)		
Power factor		≥0.99		
Harmonic distortion (THDi)		≤3% Linear load		
Bypass voltage range		Max.voltage: 220V: +25% (Optional +10%, +15%, +20%) 230V: +20% (Optional +10%, +15%) 240V: +15% (Optional +10%)		
		Min.voltage: -45% (Optional -10%, -20%, -30%)		
FREQUENCY				
Frequency protection range		50/60Hz ±10%		
OUTPUT				
Output voltage		220/230/240Vac (L+N+PE)		
Voltage regulation		±1%		
Power factor		1.0		
Output frequency	Line mode	±1%/±2%/±4%/±5%/±10% of the rated frequency (Optional)		
	Bat. mode	(50/60±0.1%)Hz		
Transfer time	AC mode to Bat.mode	0ms		
	Inverter to Bypass	0ms		
Output waveform		Pure Sinewave		
Crest factor		3:1		
Harmonic distortion (THDv)		≤2% Linear load ≤5% Non linear load		
Overload	AC mode	Load≤110%: last 60min turn to bypass; ≤125%: last 10min turn to bypass; ≤150%: last 1min turn to bypass; ≥150% turn to bypass mode immediately		
	Bat.mode	Load≤110%: last 10min; ≤125%: last 1min; ≤150%: last 5s; ≥150%: shut down UPS immediately		
	Bypass mode	Breaker 2×32A	Breaker 2×50A	Breaker 2×63A
EFFICIENCY				
Efficiency		Up to 93.5%	Up to 94.5%	
BATTERY				
Battery voltage	Long run unit	±96Vdc~±120Vdc (16~20pcs, 16pcs default, Standard unit and 20pcs no power derating; 18pcs output power factor 0.9; 16pcs output power factor 0.8)		
		±192/204/216/228/240Vdc (32/34/36/38/40pcs supportable)		
Charging current		14A (Max.)	16A (Max.)	18A (Max.)
		Charging current can be set according to battery capacity		
PHYSICAL				
Dimension (W×D×H)	Long run unit	250×580×655mm		
Net weight	Long run unit	33kg	37kg	38kg
ENVIRONMENTAL				
Operating temperature		0℃~40℃		
Storage temperature		-25℃~55℃		
Humidity range		0~95% (Non condensing)		
Altitude		<1500m, derating required when >1500m		
Noise level		<55dB at 1 Meter		<58dB at 1 Meter
STANDARDS				
Safety		IEC/EN 62040-1, IEC/EN 62477-1		
EMC		IEC/EN 62040-2 (IEC 61000-4-2, IEC 61000-4-3, IEC 61000-4-4, IEC 61000-4-5, IEC 61000-4-6, IEC 61000-4-8, IEC 61000-4-11, IEC 61000-2-2)		



Scan to download the data sheet

Specifications are subject to change without prior notice  
Data above are typical values for reference only, not as a basis for engineering design

## TRANSFORMER-BASED INDUSTRIAL UPS



### High-reliability design

- Double Conversion online design makes the output a pure sine wave source with tracking frequency, phase-lock and voltage regulation, noise suppression, and power fluctuation interference, providing the load with more comprehensive protection.
- Zero transfer time of output satisfies the high standard power requirements of precision equipment.
- Modular design, dual-CPU control, and high reliability and stability ensure safe operation and high efficiency.

### Optimization of high-performance battery

- Adapt intelligent battery management (ABM) technology; thus, it extends battery life and reduces battery maintenance times.
- Advanced CC (Constant current)/CV (Constant voltage) auto-conversion charging technology maximizes the activation of cells. Thus, it saves charging time and extends the battery life.

### High reliability during operation

- Pure online static bypass technology provides strong protection against overload and fault.
- Built-in manual maintenance bypass further improves the reliability of continuous operation.

### Wide input range

- The AC input voltage range is  $380V \pm 20\%$ , reducing the battery using frequency and greatly extending the battery life.
- Wide input frequency range, ensure all types of fuel generators connected work stable.

### Comprehensive and reliable protection

- Self-diagnosis function before start-up, avoiding the risks that may lead to failure.
- Multi-protections such as overload, short-circuit, over-temperature, battery under voltage, battery overcharge, and so on greatly ensure the system's stability and reliability.

### User-friendly network management

- Chinese and English languages are selectable via LCD panel.
- RS232 communication interface.
- RS485 communication interface (Support MODBUS protocol).
- SNMP card (Optional).
- Event logs can be recorded in the LCD panel.
- Dry contact signal ports are available.

## TRANSFORMER-BASED INDUSTRIAL UPS

### Technical Specifications:

MODEL	UM8000TWRIND	UM10000TWRIND	UM15000TWRIND	UM20000TWRIND	UM30000TWRIND	UM40000TWRIND
Capacity	8kVA/6.4kW	10kVA/8kW	15kVA/12kW	20kVA/16kW	30kVA/24kW	40kVA/32kW
INPUT						
Operating voltage range	380/400Vac (± 20%), (3Ph+N+PE)					
Operating frequency range	50/60Hz (± 5%)					
Power factor	≥ 0.97 *					
OUTPUT						
Output voltage	220Vac (± 1%)					
Output frequency	50/60Hz (± 0.5%)					
Crest factor	3:1 (Max)					
Efficiency	86%				88%	
Harmonic distortion (THDv)	≤ 2% (Linear load)					
BATTERY						
Battery voltage	192Vdc				240Vdc	
SYSTEM FEATURES						
Transfer time	0 ms (Line mode → Battery mode)					
Overload	110% ≤Load≤ 150%/1min; > 150%/200ms, to Bypass					
LED display	Low battery voltage, Mains status, Inverter, Bypass, UPS failure, Overload					
LCD display	I/O voltage, Frequency, Battery voltage, Load percentage, Internal temperature					
Communication interface	RS232, RS485, EPO, Dry contact, SNMP (Optional)					
ENVIRONMENTAL						
Operating temperature	0 ~ 40°C					
Storage temperature	-25 ~ 55°C					
Humidity range	0 ~ 95% (Non-condensing)					
Altitude	< 1500m					
Noise level	< 60dB				< 65dB	
PHYSICAL						
Dimension W × D × H (mm)	305 × 585 × 864				350 × 650 × 1050	
Net weight (kg)	110	115	130	145	205	255
Shipping weight (kg)	120	125	140	155	220	270
STANDARDS						
Safety	IEC/EN 62040-1; IEC 62477-1					
EMC	IEC/EN 62040-2 (IEC 61000-4-2, IEC 61000-4-3, IEC 61000-4-4, IEC 61000-4-5, IEC 61000-4-6, IEC 61000-4-8, IEC 61000-4-11, IEC 61000-2-2)					
Performance	IEC/EN 62040-3					

\* With optional filter

Specifications are subject to change without prior notice  
Data above are typical values for reference only, not as a basis for engineering design



Scan to download the data sheet





# OFF-GRID INVERTERS

Unomat LINK Inverter is an off-grid solar rechargeable household inverter power supply. High-reliability system, strong environment adaptability, and full protection function. Available in 1KVA and 2KVA capacity.

Bliss, our off-grid inverter, provides a smooth switch to backup power, ensuring uninterrupted operations. Enjoy the advantages of cutting-edge technology designed for efficiency, reliability, and seamless compatibility with renewable energy systems.



Link Inverter



Bliss Inverter

## LINK INVERTER



### High-reliability system

- Advanced digital automatic control technology ensures the power is durable and reliable.

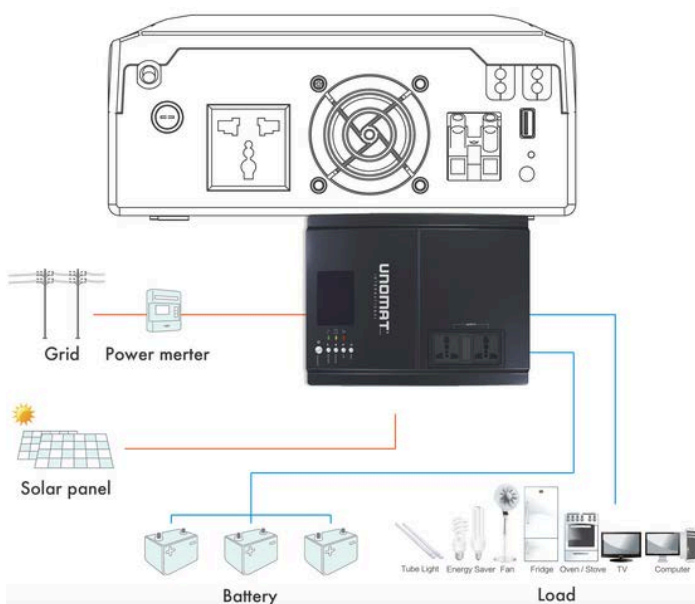
### Strong environment adaptability

- Wide input voltage and frequency range avoid frequent switching.
- 3 stages: Intelligent Charging Control
- Off-mode charging function.

### Full protection function

- Inverter short circuit and overload protection function Battery over-discharge protection.
- The batteries will be disconnected and protected once fully charged.
- Battery will be back discharge protection through solar PV panels.
- Solar cell module, Battery polarity reverse connection circuit protection.
- Solar charge controller, inverter, and other internal short circuit protection.

### Rear Panel





## LINK INVERTER

## Technical Specifications:

Model	LINK 1000	LINK 2000
Capacity	1000VA / 900W	2000VA / 1600W
Nominal Battery Voltage (Lead-acid battery)	12Vdc	24Vdc

## LINE MODE

INPUT	
Nominal Voltage	230Vac
Voltage Range	170~280Vac (Narrow range) 90~280Vac (Wide range)
Nominal Frequency	50Hz or 60Hz
OUTPUT	
Voltage	230Vac
Frequency/Waveform	Tracking the Utility
Transfer Time	20ms Typical

## BACKUP MODE

OUTPUT		
Voltage	220/230/240Vac	
Frequency	50Hz or 60Hz (Auto detection)	
Waveform	Simulated Sine Wave	
Protection	Low battery alarm, low battery shutdown, over charge protection, overload protection, over temperature protection, short circuit protection	
Battery charger (Power by AC)		
Charging algorithm	3-steps charging	
AC charging mode	10A/20A	10A/20A
Floating charging voltage	13.75±0.25V	27.50±0.50V
Overcharging voltage	15.30V	30.60V
Solar battery charger		
MAX. input power	600W	1200W
Charging current (PWM)	50A	
System DC Voltage	12Vdc	24Vdc
Optimal work voltage range	15V~18V	30V~32V
MAX. PV input current	40V	60V
MAX. PV input current	50A	

## GENERAL

PHYSICAL		
Dimension (D×W×H)	316×227×92mm	
Net Weight	3.1kg	3.3kg
ENVIRONMENT		
Operating Environment	0~50℃, 0%~90% relative humidity (Non-condensing)	
Storage Environment	-15℃ to 55℃, 0% to 90% humidity (Non-condensing)	
Noise Level	Less than 50dB	
Built-in USB Charger (5V×1A max)	Optional	
AC input voltage range selection	Yes	
AC charging current selection	Yes	
Low DC cut-off voltage setting	Yes	
AC output rating voltage selection	Yes	
Buzzer mute control	Yes	
Battery Voltage & load percentage display	Yes	



Scan to download the data sheet

Specifications are subject to change without prior notice  
Data above are typical values for reference only, not as a basis for engineering design



## BLISS INVERTER



### Safety

- 6kV lightning protection.
- DC - DC high frequency isolating converter.
- Battery input and AC output fully isolation.

### Green

- Up to 94% efficiency.
- Output power factor is 1.0.
- Intelligent cooling fan control.

### Reliable

- Widely input voltage of AC and PV.
- Pure sine wave output.
- High-frequency switching technology.

### Fast-charging

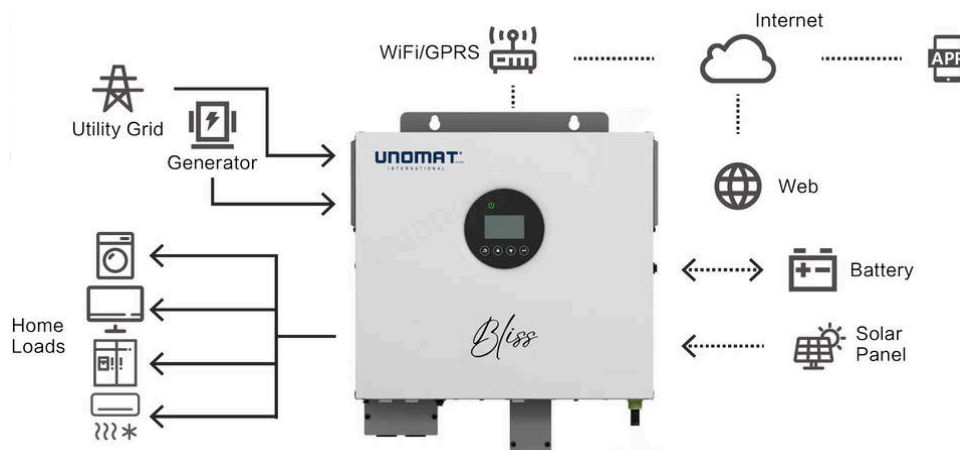
- Built-in 120A MPPT solar charger
- Built-in communication port for BMS

### User-friendly

- Dot-matrix screen and physical button
- Built-in WiFi module (optional)
- APP support (optional)

### Applications

- Support home appliances/office equipment/lighting
- equipment etc.
- Support lead-acid and lithium-ion battery
- Max. 6 units in parallel



## BLISS INVERTER

## Technical Specifications:

Model	BLISS-3.6KW		BLISS-6KW	
Input(AC)				
Nominal Voltage	220/230/240Vac			
Selectable Voltage Range	170~280Vac(For Personal Computers) 90~280Vac(For Home Appliances)			
Frequency	50/60Hz (Auto Detection)			
Power Factor	0.98			
AC Switch	Optional			
Generator input	Support			
PV String Input(DC)				
Max PV Array Open Circuit Voltage Range	500Vdc			
Start-up Voltage	120Vdc			
Initial Feeding Voltage	150Vdc			
MPPT Voltage Range	120Vdc ~ 450Vdc			
Number of MPPT Trackers	1			
Maximum PV input Power	4000W		6000W	
DC Switch	Optional			
AC Output				
Nominal output Power	3600W/3600VA		6000W/6000VA	
Nominal Voltage (Batt. Mode)	220/230 (Default)/240Vac ± 5%, User Settable			
Surge Power	7200VA		12000VA	
Transfer Time	15ms (For Personal Computers); 20ms (For Home Appliances)			
Waveform	Pure sine wave			
Output THDv(@Linear Load)	<3%			
PV Mode Maximum Efficiency	97.00%			
Battery Mode Efficiency(Peak)	90~94%			
Battery & Charge				
Nominal Votage(LiFePO4)	25.6Vdc		51.2Vdc	
Nominal Votage(Lead Acid)	24V		48V	
Max. AC charge Current	120A		120A	
Max. Solar Charge Current	120A		120A	
Max. Charge Current(Solar + AC charge current)	120A (User selectable)		120A(User selectable)	
Interface & Mechanical				
Display	LCD & LED			
Parallel Function	Yes, 6 units			
Communication Interface	RS232/USB; Optional: RS485/CAN/Dry Contact/WIFI/Bluetooth			
Dimension (D*W*H/mm)	410 × 366 × 127mm			
Net Weight (kg)	11kg		12.5kg	
Protection				
Output Over-current Protection	Yes			
PV Reverse Polarity Protection	Yes			
String Fault Detection	Yes			
Insulation Detection	Yes			
AC/DC Surge Protection	Yes			
General Specifications				
Operating Temperature	-10℃ ~ 50℃			
Storage Temperature	-15℃ ~ 60℃			
Relative Humidity	5%~ 95%, non-condensing			
Altitude	<3000m			
Protection Class	IP20			
Standards				
Safety	IEC/EN62109-1&2			
EMC	EN61000-6-1&2&3&4			
RoHS	Yes			



Scan to download the data sheet

Specifications are subject to change without prior notice  
Data above are typical values for reference only, not as a basis for engineering design

# INKJET PHOTO PAPER

The Unomat Inkjet Photo Paper is one of a kind. We help you 'print' your beautiful memories on a fine-quality piece of paper. Available in glossy and luster, from 4x6 inch to 60 inch.



4 x 6 inch



5 x 7 inch



6 x 8 inch



A4



A3



A3+



5-inch x 65m



6-inch x 65m



8-inch x 65m



12-inch x 65m/30m



16-inch x 30m



17-inch x 30m



24-inch x 30m



36-inch x 30m



42 inch (106.7cm) x 30m

42-inch x 30m



44 inch (112cm) x 30m

44-inch x 30m



50-inch x 30m



60-inch x 30m





**UNOMAT**<sup>®</sup>  
INTERNATIONAL GERMANY



**JAMAICA TRADING** CO. L.L.C.

PO Box 45365, Dubai, UAE  
+971 4 353 3155  
[info@jamaica-trading.com](mailto:info@jamaica-trading.com)  
[www.jamaica-trading.com](http://www.jamaica-trading.com)

**JTC INTERNATIONAL** FZCO

PO Box 263417, Jebel Ali, Dubai, UAE  
+971 4 883 4290  
[info@jtcDubai.com](mailto:info@jtcDubai.com)  
[www.jtcDubai.com](http://www.jtcDubai.com)

# UNOMAT<sup>®</sup>

GERMANY

INTERNATIONAL

**UNOMAT INTERNATIONAL FZCO**

+971 4 883 7537

[info@unomatinternational.com](mailto:info@unomatinternational.com)

[www.unomatinternational.com](http://www.unomatinternational.com)

